

## Solar Battery 2V 300Ah Sunipod HCAP-2V 300Ah

Hi-performance batteries designed to meet the demands of solar power generation applications

### HIGHLIGHTS

- Flame retardant cell container and cover material.
- Proprietary process technology ideal for tropical conditions.
- Robust and aesthetically attractive modular design.
- Leak resistant double seal terminal design.
- High performance operation with no maintenance (doesn't require routine water additions or specific gravity checks).
- Efficient Vent Valve Assembly.
- Reliable performance under float and cyclic usage.
- Balanced active material design.
- Excellent charge acceptance.
- Good deep discharge recovery.
- Uniformly useful capacity during its expected service life.
- Long Cycle Life of 1200 cycles at 50% DOD.
- **Long Float Life at 27°C.**
- Usage of highest purity material results Low self discharge Long Shelf life.
- Heavy-duty plates.
- High conductivity lead coated copper connectors.
- Better usage of foot print area due to stackable modular design.



### APPLICATIONS:

- Diesel Generator Alternative Using Solar Power Plants
- Lower Your Electric Bill Using Solar Power Stations

### SPECIFICATIONS

Nominal Voltage	2V
Capacity (10 hr, 25°C)	300Ah
Dimension	Length 171 mm
	Width 151 mm
	Height 330 mm
	Total Height 366 mm
Approx. Weight	19.5 Kg

### CHARACTERISTICS

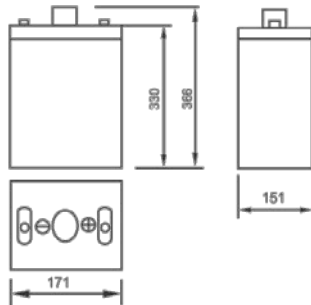
Capacity (25°C)	10 hour rate	300Ah
	5 hour rate	240Ah
	1 hour rate	180Ah
	1.5 hour discharge to 1.75V	120A

### CHARACTERISTICS cont.

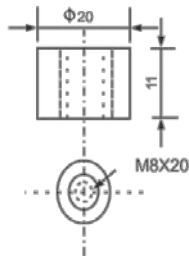
Capacity affected by temperature (10 hr)	40°C	102%
	25°C	100%
	0°C	85%
	-15°C	65%
Self-discharge (25°C)	3 month	Remaining Capacity: 91%
	6 month	Remaining Capacity: 82%
	12 month	Remaining Capacity: 64%
Nominal operating temperature	25°C±3°C	
Operating temperature range	-15°C to 50°C	
Float charging voltage (25°C)	2.25 to 2.30V	
Cyclic charging voltage (25°C)	2.35 to 2.40V	
Internal Resistance (Fully charged, 25°C)	Approx. 0.7 mΩ	

**DIMENSIONS**

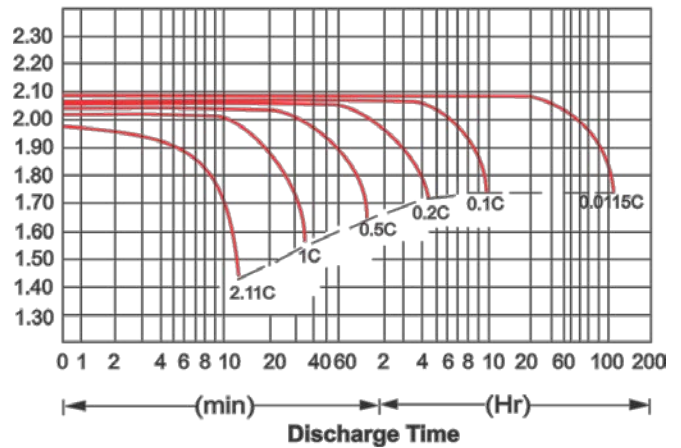
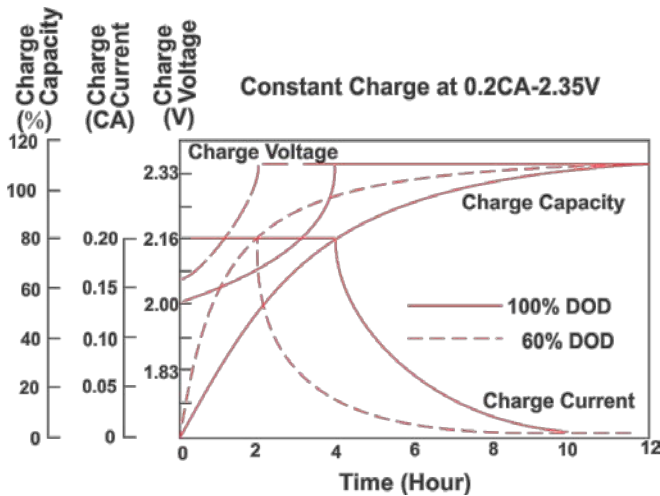
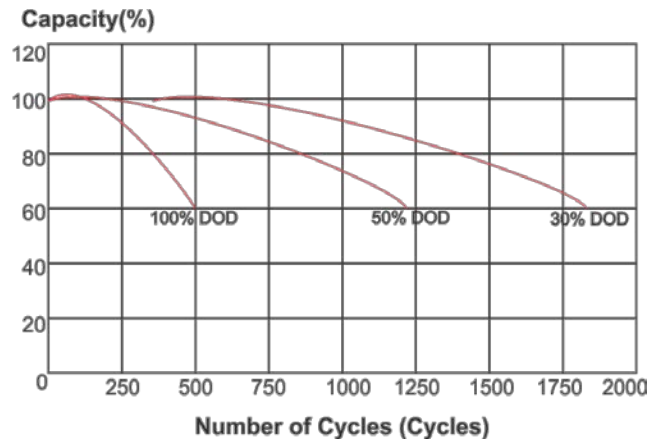
Outer dimensions (mm)



Terminal Type (mm)


**DISCHARGE CHARACTERISTICS (25°C)**

Discharge Voltage (V/Cell)


**CHARGING CHARACTERISTICS (25°C)**

**CYCLE LIFE (25°C)**


Specifications included in this datasheet are subject to change without notice. Electric data without guarantee.

**Contact India Office:**

 Victory Mansion, Sitaladevi Temple Road, Mahim, Mumbai – 400016  
 Ph: 022-6464-9090

**Contact US Office:**

 509 Granger Terrace, Sunnyvale, CA – 94087  
 Ph: +1-408-431-0408
