

Solar Battery 2V 800Ah Sunipod HCAP-2V 800Ah

Hi-performance batteries designed to meet the demands of solar power generation applications

HIGHLIGHTS

- Flame retardant cell container and cover material.
- Proprietary process technology ideal for tropical conditions.
- Robust and aesthetically attractive modular design.
- Leak resistant double seal terminal design.
- High performance operation with no maintenance (doesn't require routine water additions or specific gravity checks).
- Efficient Vent Valve Assembly.
- Reliable performance under float and cyclic usage.
- Balanced active material design.
- Excellent charge acceptance.
- Good deep discharge recovery.
- Uniformly useful capacity during its expected service life.
- Long Cycle Life of 1200 cycles at 50% DOD.
- **Long Float Life at 27°C.**
- Usage of highest purity material results Low self discharge Long Shelf life.
- Heavy-duty plates.
- High conductivity lead coated copper connectors.
- Better usage of foot print area due to stackable modular design.



APPLICATIONS:

- Diesel Generator Alternative Using Solar Power Plants
- Lower Your Electric Bill Using Solar Power Stations

SPECIFICATIONS

Nominal Voltage	2V	
Capacity (10 hr, 25°C)	800Ah	
Dimension	Length	410 mm
	Width	175 mm
	Height	330 mm
	Total Height	365 mm
Approx. Weight	53 Kg	

CHARACTERISTICS

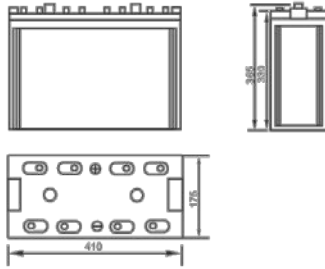
Capacity (25°C)	10 hour rate	800Ah
	5 hour rate	640Ah
	1 hour rate	480Ah
	1.5 hour discharge to 1.75V	320A

CHARACTERISTICS cont.

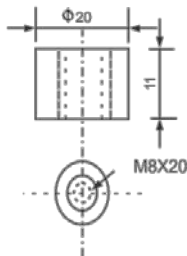
Capacity affected by temperature (10 hr)	40°C	102%
	25°C	100%
	0°C	85%
	-15°C	65%
Self-discharge (25°C)	3 month	Remaining Capacity: 91%
	6 month	Remaining Capacity: 82%
	12 month	Remaining Capacity: 64%
Nominal operating temperature		25°C±3°C
Operating temperature range		-15°C to 50°C
Float charging voltage (25°C)		2.25 to 2.30V
Cyclic charging voltage (25°C)		2.35 to 2.40V
Internal Resistance (Fully charged, 25°C)		Approx. 0.5 mΩ

DIMENSIONS

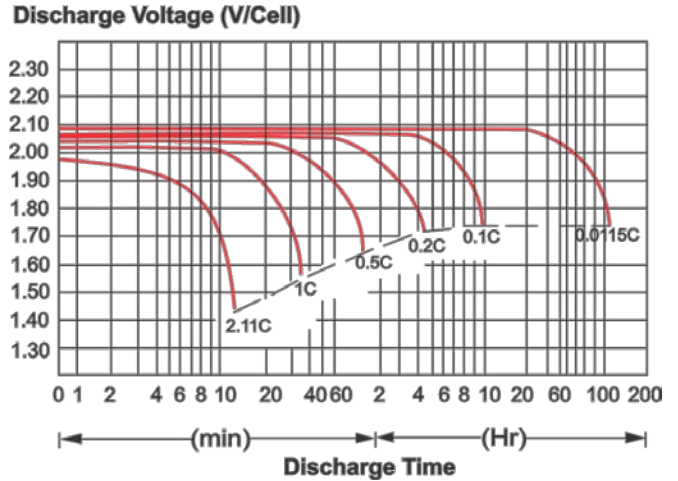
Outer dimensions (mm)



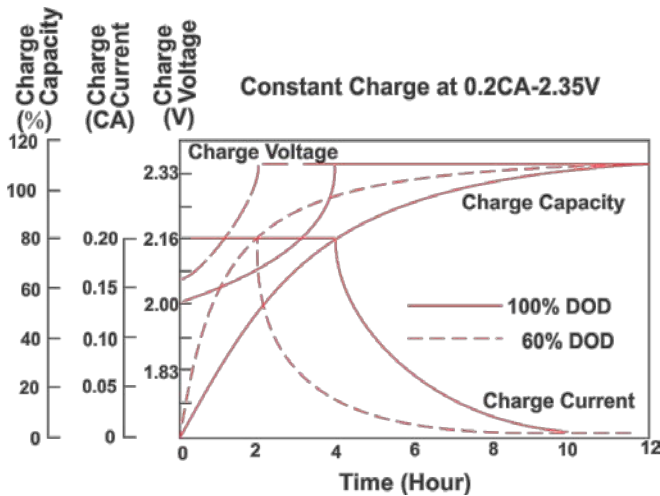
Terminal Type (mm)



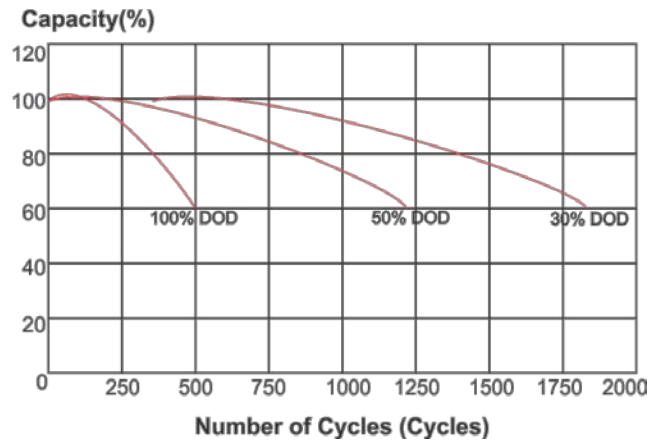
DISCHARGE CHARACTERISTICS (25°C)



CHARGING CHARACTERISTICS (25°C)



CYCLE LIFE (25°C)



Specifications included in this datasheet are subject to change without notice. Electric data without guarantee.

Contact India Office:

Victory Mansion, Sitaladevi Temple Road, Mahim, Mumbai – 400016
Ph: 022-6464-9090

Contact US Office:

509 Granger Terrace, Sunnyvale, CA – 94087
Ph: +1-408-431-0408

